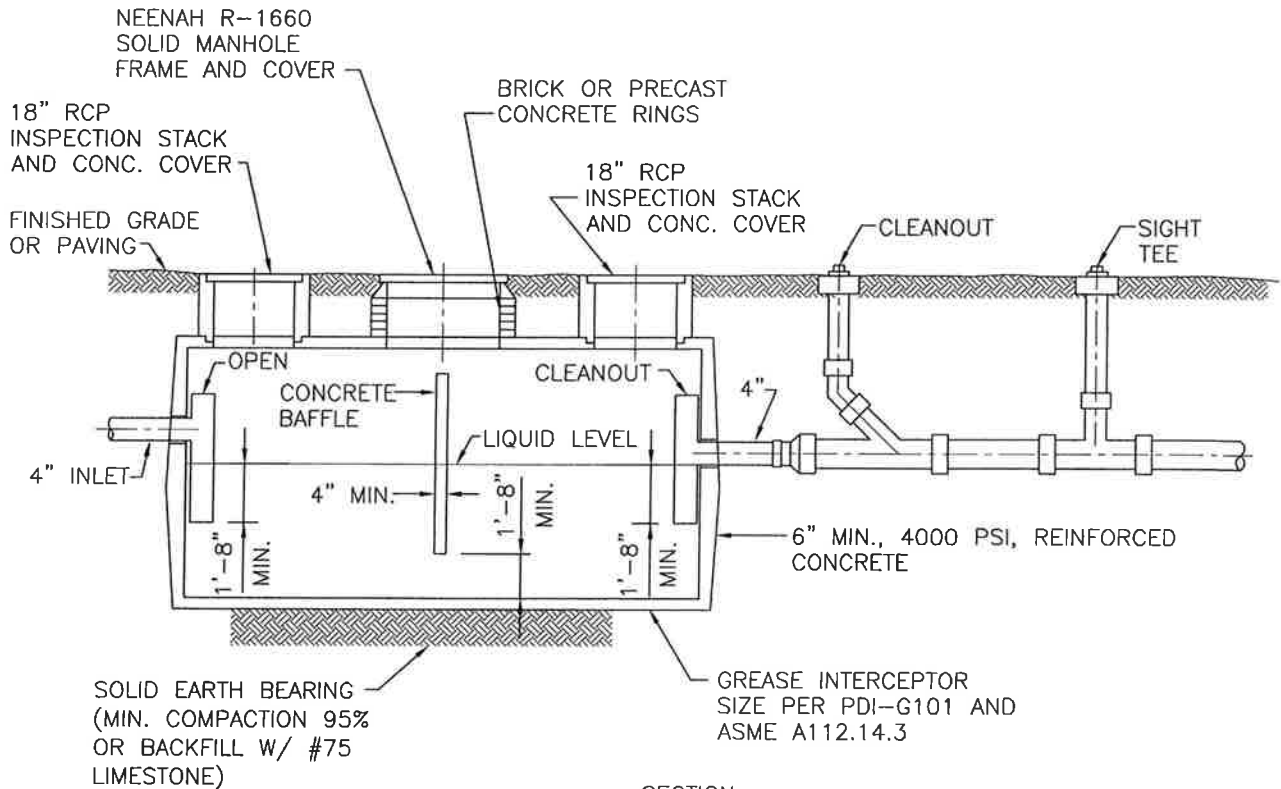


GENERAL SITE ARRANGEMENT



SECTION

NOTE:

DISCHARGE TO GREASE REMOVAL SYSTEM CANNOT EXCEED 130°F.

DISCHARGE FROM GREASE REMOVAL SYSTEM CANNOT EXCEED 100 MG/L FOG

PROJECT NO.:
ENGR./ARCH.:
DRAWN BY:
DESIGN BY:
CHECKED BY:
CAD FILE:
DATE:



TYPICAL GREASE INTERCEPTOR
INSTALLATION DETAIL

DRAWING NO.
SHEET OF