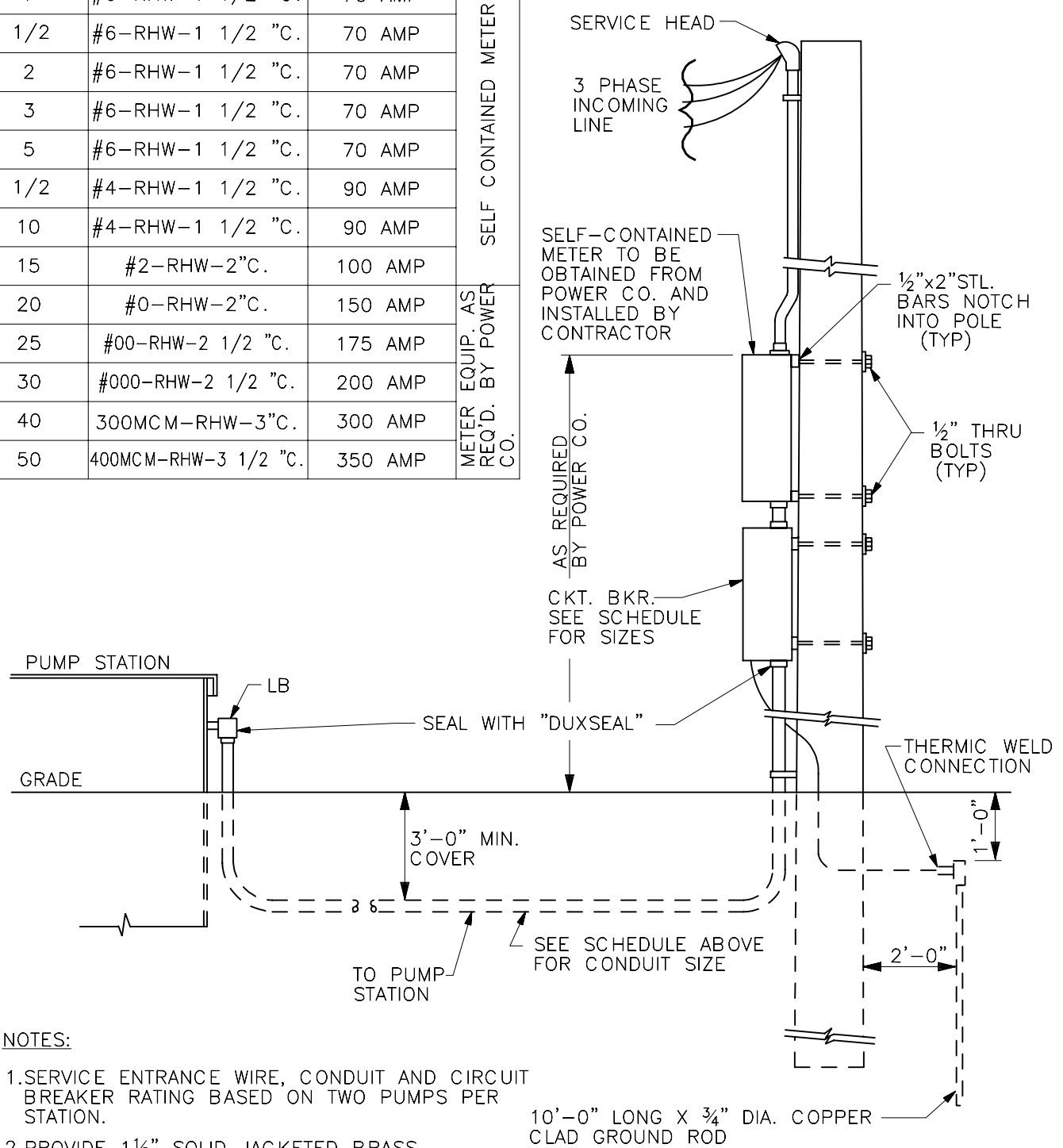


BAR = 1" AT PLOT SCALE

INTL REF: M:\projects\2487108-Details\Working\16-39.dgn

STD: C-0801-11X8A

MOTOR H.P. PER PUMP	SERVICE ENTRANCE WIRE & CONDUIT	POLE MOUNTED MOLDED CASE CIRCUIT BREAKER NEMA-4 ENCLOSURE	
1	#6-RHW-1 1/2 "C.	70 AMP	SELF CONTAINED METER
1 1/2	#6-RHW-1 1/2 "C.	70 AMP	
2	#6-RHW-1 1/2 "C.	70 AMP	
3	#6-RHW-1 1/2 "C.	70 AMP	
5	#6-RHW-1 1/2 "C.	70 AMP	
7 1/2	#4-RHW-1 1/2 "C.	90 AMP	
10	#4-RHW-1 1/2 "C.	90 AMP	
15	#2-RHW-2"C.	100 AMP	
20	#0-RHW-2"C.	150 AMP	
25	#00-RHW-2 1/2 "C.	175 AMP	
30	#000-RHW-2 1/2 "C.	200 AMP	METER EQUIP. AS REQ'D. BY POWER CO.
40	300MCM-RHW-3"C.	300 AMP	
50	400MCM-RHW-3 1/2 "C.	350 AMP	



NOTES:

- 1.SERVICE ENTRANCE WIRE, CONDUIT AND CIRCUIT BREAKER RATING BASED ON TWO PUMPS PER STATION.
- 2.PROVIDE 1 1/2" SOLID JACKETED BRASS PADLOCK WITH 3 KEYS FOR CIRCUIT BREAKER ENCLOSURE.

10'-0" LONG X 3/4" DIA. COPPER CLAD GROUND ROD



Chester Engineers
260 Airside Drive, Moon Twp., PA 15108-2793
(412)809-6600 FAX(412)809-6611
www.chester-engineers.com

Drawing
16-39

SCALE:	DATE:
NONE	01/07
SHEET:	STD. NO.
1 OF 1	16-39

McCANDLESS TOWNSHIP SEWER AUTHORITY
ALLEGHENY COUNTY, PENNSYLVANIA
230V - 3W OR 4W AND 120/208V - 4W
ELECTRICAL SERVICE AND METERING
TO UNDERGROUND PUMPING STATIONS
50 H.P. OR SMALLER